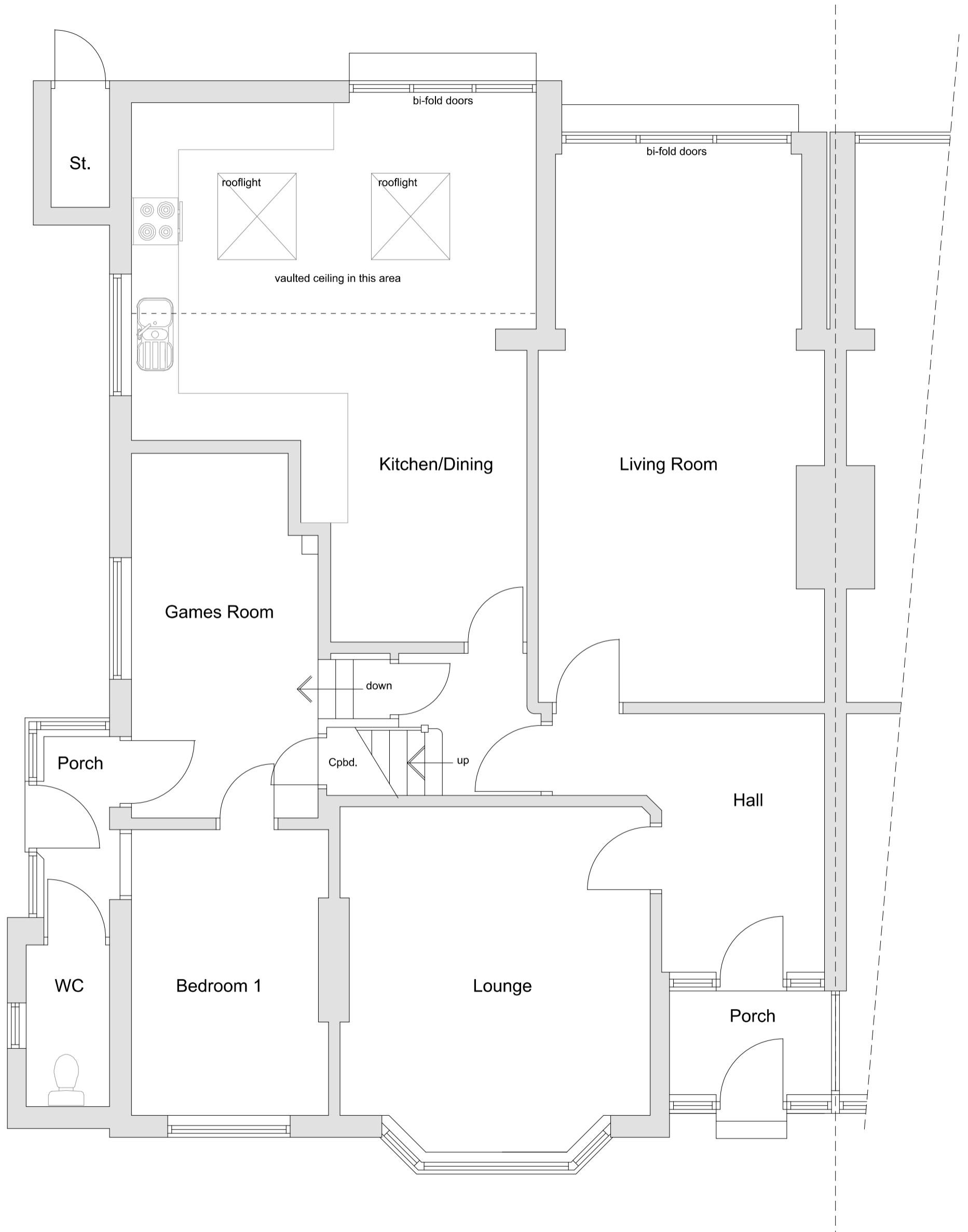


REV	DESCRIPTION	DATE	DRAWN
-	ISSUED FOR APPROVAL	15.02.21	AH



20053
241 MATHER AVENUE
ALLERTON
LIVERPOOL
L18 9UD
EXISTING GROUND FLOOR

Group D Architects
14 Ashfield Road
Liverpool
L17 0BZ
T: 0151 542 5027

DWG No: 20053 (SU) 100
DATE: 15.02.2021
SCALE: 1:50 @ A3
DRAWN: AH
CHKD: JT

