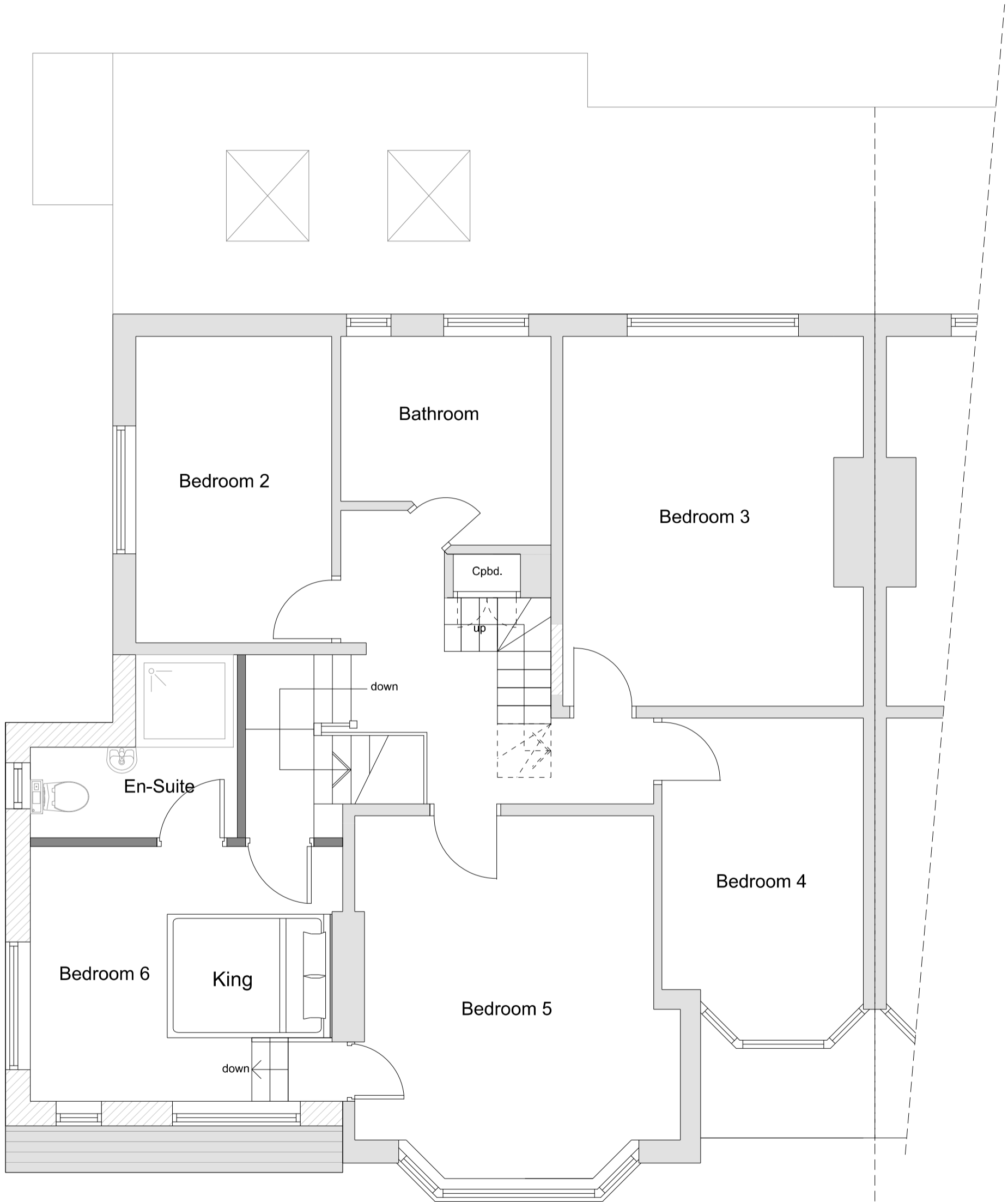


REV	DESCRIPTION	DATE	DRAWN
-	ISSUED FOR APPROVAL	15.02.21	AH
A	AMENDMENTS AS PER CASE OFFICER COMMENTS	17.11.21	JT



20053
241 MATHER AVENUE
ALLERTON
LIVERPOOL
L18 9UD
PROPOSED FIRST FLOOR

Group D Architects
14 Ashfield Road
Liverpool
L17 0BZ
T: 0151 542 5027

DWG No:
DATE:
SCALE:
DRAWN:
CHKD:

20053 (PL) 101
15.02.2021
1:50 @ A3
AH
JT

